



RoadBotics by Michelin empowers you to make objective, data-driven decisions about your road network.

We use artificial intelligence to automate your road assessment process and generate interactive maps, unbiased ratings, and practical tools to save valuable time and taxpayer dollars.

RoadBotics by Michelin has enabled over 250 governments and engineering firms around the world to objectively manage road networks. We look forward to connecting with you.

GET IN TOUCH

📍 Pittsburgh, PA

✉ info@roadbotics.com

📞 +1 412-345-3398

🌐 www.roadbotics.com

SIMPLE COLLECTION

Use your smartphone to quickly collect and upload your road network imagery.

Data Collection

Mount your smartphone in the windshield, push "Record," and begin collecting your road imagery data with our app.

Custom Routes

Follow RoadBotics by Michelin's turn-by-turn directions to ensure complete network coverage.

Complete Image Inventory

Once you are finished uploading, you have created a complete image inventory of your road network with GPS, time, and date stamps. Now our artificial intelligence goes to work!



INTERACTIVE PLATFORM

When analysis is complete, you can view the condition of your entire road network on one user-friendly platform.



5-Level Rating System



Useful Pavement Condition Data



Vivid Imagery with Metadata



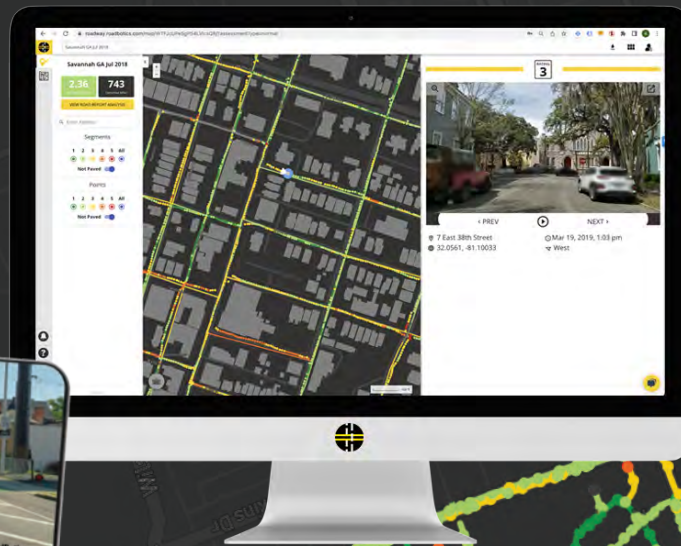
World-Class Customer Service



Virtually Drive Any Road



Export and Convert Ratings



OBJECTIVE, ACTIONABLE RATINGS

Make data-driven decisions about your road network with concise color-coded ratings.

Easy Integrations

Import RoadBotics by Michelin data into the leading pavement and asset management platforms. Whatever your current process, we will work with you to integrate our road rating data.

Multiple Views of Your Data

Create effective pavement management plans by customizing your views and insights. Easily select which areas and ratings you'd like to see.

5-Level Rating System

Each point and segment in your road network receives a 1-5 color-coded rating.

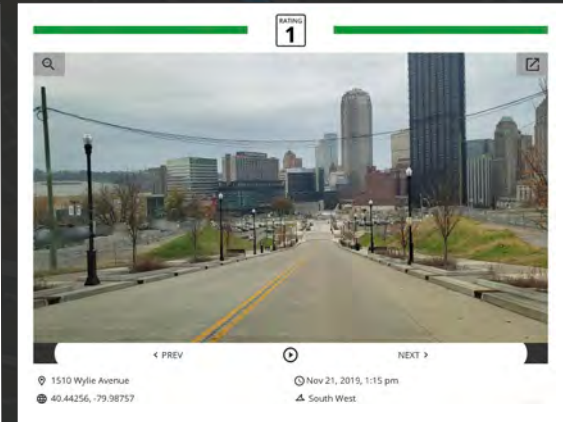
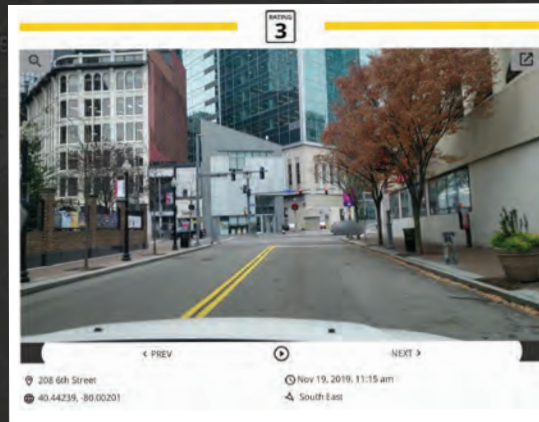
RATING 1 No or very minor surface damage

RATING 4 Significant damage or emerging critical failures

RATING 2 Minor surface damage, no critical issues

RATING 5 Major surface damage or critical surface failures

RATING 3 Appearance of pervasive surface distresses



DATA INTEGRATIONS

If you already use an existing asset management platform, RoadBotics by Michelin will work with you to provide our geospatial data in a shapefile that can be easily integrated into most GIS-enabled platforms. This data is key to filling the void of pavement condition data and can simplify the pavement management planning process.

Our successful integrations include:



Esri ArcGIS

Mapping and location-based analytics platform created by Esri



CSDatum

Web-based mapping application developed by CS Davidson



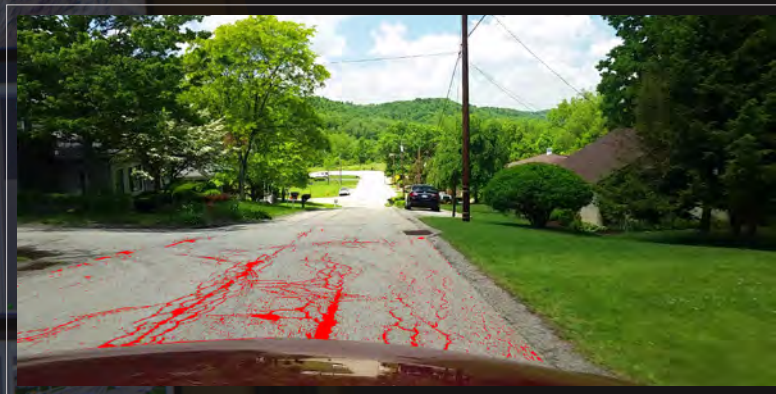
ManageMyRoads

Esri-based asset management software from RoadBotics by Michelin's Enterprise Partner BETA Group, Inc.

Don't see your existing platform management program on this list? Our team is ready to discuss custom integration options with you.

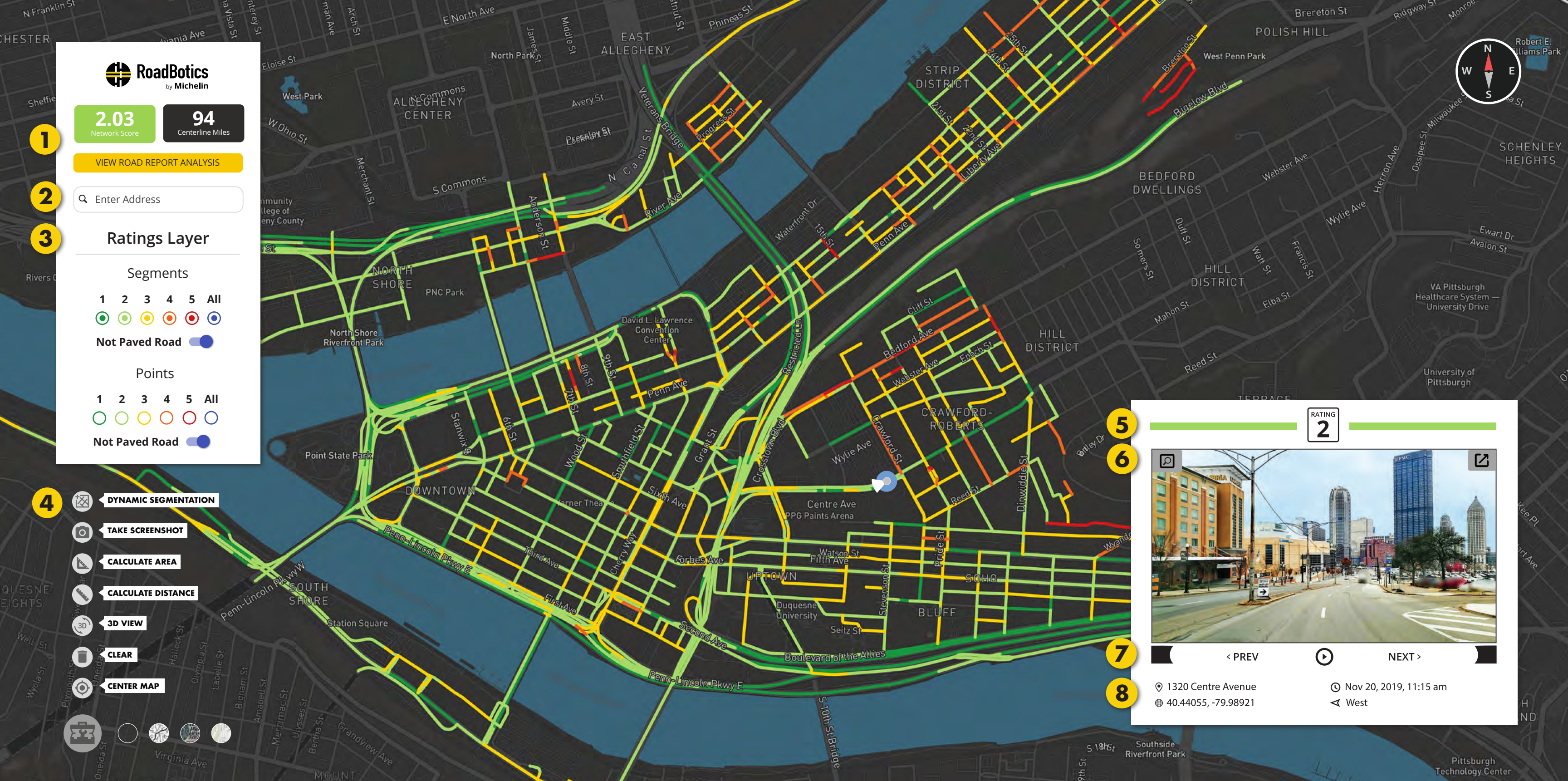
ARTIFICIAL INTELLIGENCE

Machine learning is an application of artificial intelligence that allows computers to identify patterns in data, make predictions based on those patterns, and build models that explain the world. RoadBotics by Michelin applies it to pavement assessments so we can analyze roads and their distresses. The more roads our algorithms review, the more refined and accurate their ratings become.



RoadBotics by Michelin artificial intelligence, through its machine learning process, scans high-resolution image data on a pixel-by-pixel basis to recognize road distresses a trained engineer would look for when conducting a visual survey. After identifying those distresses, a 1-5 condition rating is automatically generated to score the quality of each 10-foot section of road.

The benefits of using RoadBotics by Michelin artificial intelligence to assess your road network include more objective data, accurate ratings, and faster analysis.



WELCOME TO ROADWAY!

Once your road network image data has been collected and assessed, you'll receive access to RoadWay, our interactive, online platform.

RoadWay can visually communicate the condition of your roads, help you efficiently prioritize maintenance, and allow for virtual inspection of your roads at any time from your desktop.

1 ROAD REPORT

Get a quick look at your overall network score and the number of centerline miles that have been assessed, plus you can click to a more comprehensive Road Report Analysis.

2 ADDRESS SEARCH

You can see the rating information about any address in your road network by typing it into the search bar.

3 SEGMENT & POINT RATING LAYER

Each point is equal to 10 feet of road, and many points in a row create a segment. Dark green points and segments are rated 1 and considered in the best condition. Red represents those in the worst condition. Select which rating level(s) of points and segments you'd like to view, including those that are not paved.

4 MAP TOOLS

RoadWay tools enhance your data by giving you the ability to take screenshots, calculate area or distance, and view your network in different ways, including dark or light, satellite, and topographic views.

5 INDIVIDUAL POINT RATING

Each individual point's numerical and color-coded rating appears at the top of every point image.

6 POINT IMAGERY

High-resolution images of every 10 feet of road can be seen by clicking any point on the map, and can be zoomed into by clicking the gray *Magnifying Glass* box in the upper left of the image.

7 VIRTUAL DRIVER

View the *Previous* or *Next* point on your map, or press *Play* to virtually drive the road and view the images in motion.

8 POINT INFORMATION

At the bottom of each point image, you'll find the street address, date, and time the image was taken, its global positioning system (GPS) coordinates, and the direction the camera was facing.